



INTERMEDIATE | 1 DAY CLASS



LOOKIN' SHARP

Finished Quilt: 44" x 49"

Quilt design by Margaret Jones, featuring Details, a Hoffman Spectrum Digital Print collection and Bali Batiks and Hand-dyes.

A soft and cuddly quilt featuring the beauty and sharpness of a cacti garden.



R4577 96-Olive

884 149-Sun

885 38-Burgundy

885 269-Caterpillar

885 319-Snake

885 438-Crocus

885 649-Thistle

1384 480-Creamsicle

1895 232-Citrine

FREE PATTERN DOWNLOAD

HoffmanFabrics.com

FABRICS	1 KIT	14 KITS
R4577 96-Olive	1 Panel	2 Bolts
884 149-Sun	1 F8	1 Bolt
885 38-Burgundy	1 F8	1 Bolt
885 269-Caterpillar	1 FQ	1 Bolt
885 319-Snake	1 FQ	1 Bolt
885 438-Crocus	1 FQ	1 Bolt
885 649-Thistle	1 FQ	1 Bolt
1384 480-Creamsicle	1 F8	1 Bolt
1895 232-Citrine	1 F8	1 Bolt



LOOKIN' SHARP

This is an applique quilt with a pieced background. General knowledge of piecing and applique is assumed. You will be free to assemble the cactus and blossoms in a way that is attractive to you, making your quilt unique and special to you!

Finished size: 44 $\frac{1}{4}$ " x 49 $\frac{3}{4}$ ".

Fabric Requirements:

Background:

R4577-96-Olive - 1 panel consisting of 8 fat quarters

Applique:

Cacti:

885-269-Caterpillar - 1 FQ

885-319-Snake - 1 FQ

885-438-Crocus - 1 FQ

885-649-Thistle - 1 FQ

Blossoms:

1384-480-Creamsicle - 1 Fat $\frac{1}{8}$

884-149-Sun - 1 Fat $\frac{1}{8}$

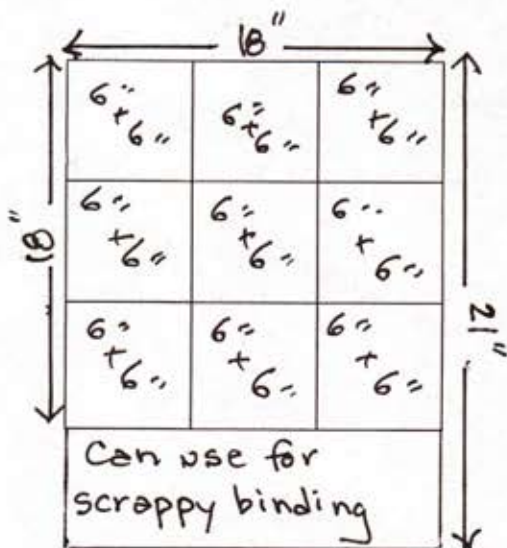
1895-232-Citrine - 1 Fat $\frac{1}{8}$

Pods:

885-38-Burgundy - 1 Fat $\frac{1}{8}$ or a 10 x 10" square

For the background, cut each of the panel fat quarters into x9 6" x 6" squares. See Diagram A.

Diagram A



You will use 72 total 6" x 6" squares for this quilt.

Lay 8 of the 6" x 6" squares horizontally in a sequence that is attractive to you. Sew these 8 squares together using a $\frac{1}{4}$ " seam making your first horizontal row. See Diagram B.

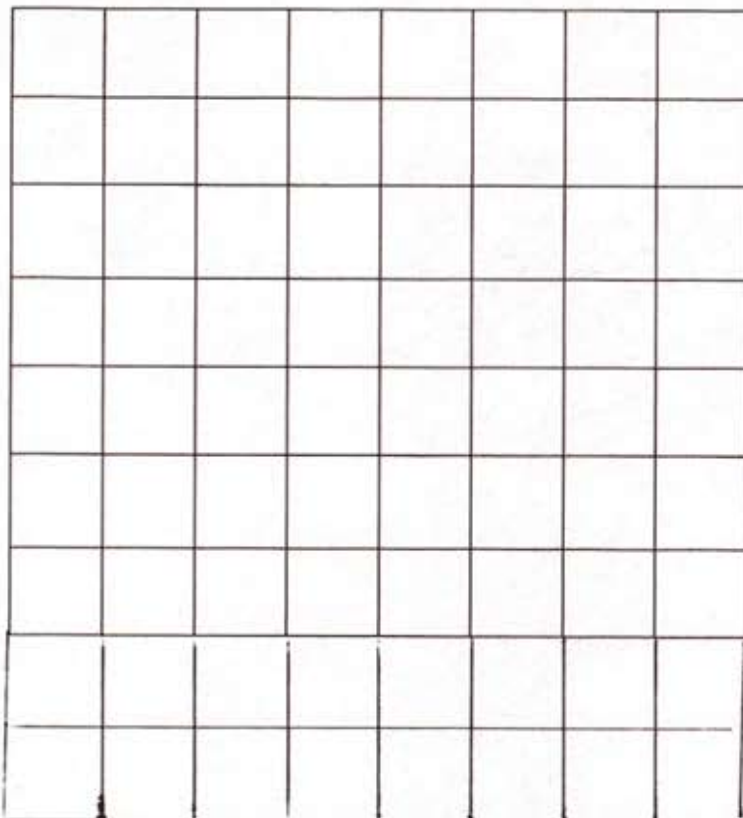
Diagram B



Repeat this process 8 more times for a total of 9 horizontal rows, each consisting of 8 of the 6" x 6" squares.

Beginning with your top row as Row 1, sew it to your Row 2 using a $\frac{1}{4}$ " seam, then sew Row 2 to Row 3, etc, until you have sewn all 9 of your rows together. See Diagram C.

Diagram C



Using your desired method of applique, cut out the cactus, cactus flowers, and pods. Note that pattern pieces included are actual size. For needle turn applique, you will need to cut the pieces larger than pictured in this pattern.

Arrange cactus in a way that is pleasing to your eye, and sew them down using your preferred method. I made each one just a little different. See Photo 1 and Photo 2.

Arrange pods as desired on tips of cacti. See Photo 1.

Arrange cactus flower petals in a way that is pleasing to your eye, and sew each one down. Again, I made each one just a little different. See Photo 2.

Quilt & bind as desired. I used 2 ½" binding made from leftover scraps for a scrappy binding! Happy quilting!

Margaret

Cactus

cut 6-7
per prickly
pear cactus

cut
2-4
per
prickly
pear
cactus

cut 1-2 per
prickly pear
cactus

cut
~1
per
prickly
pear
cactus

cut ~2 per
prickly pear
cactus

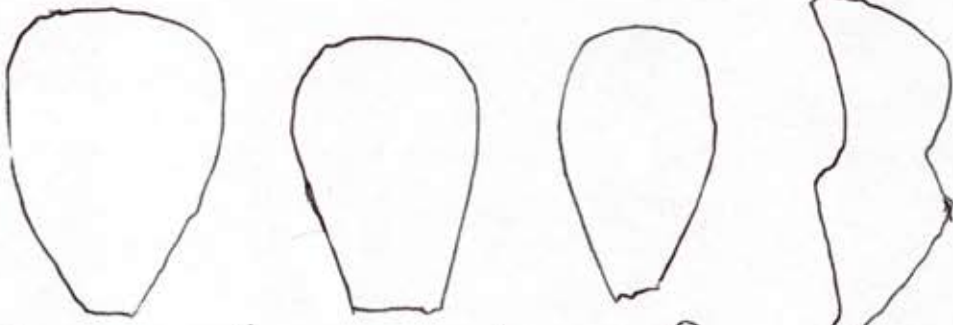
cut 1-2 per
prickly pear
cactus

cut 1 per
prickly pear
cactus

(I did 4
prickly pear
cacti on my
quilt)


Cactus Flowers (for appliqué)

Small Bloom

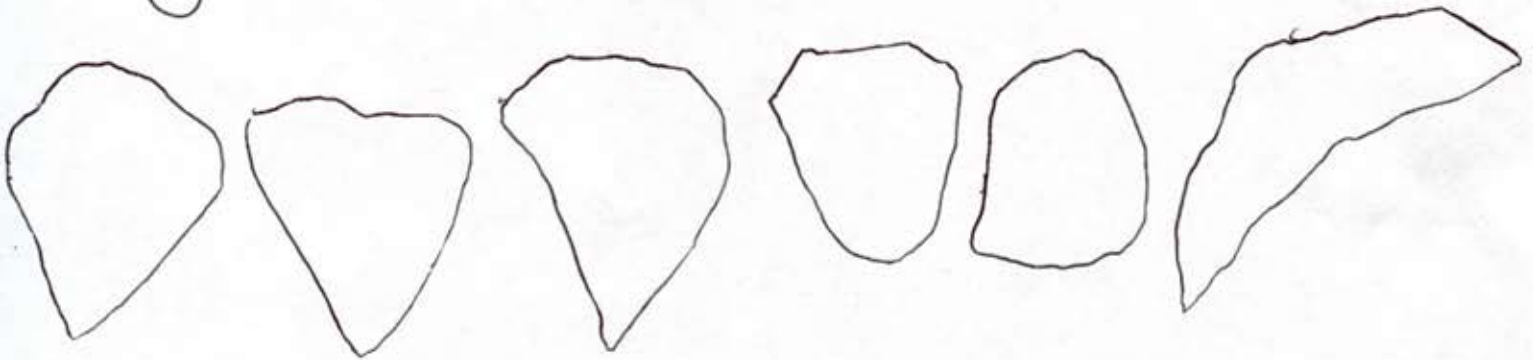



cut one of each of these for each small bloom. (I did a total of 5)

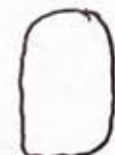
Pod


cut 1 for each small bloom

Larger (open) Bloom




Cut one of each of these petals for each larger open bloom. (I did a total of 8)

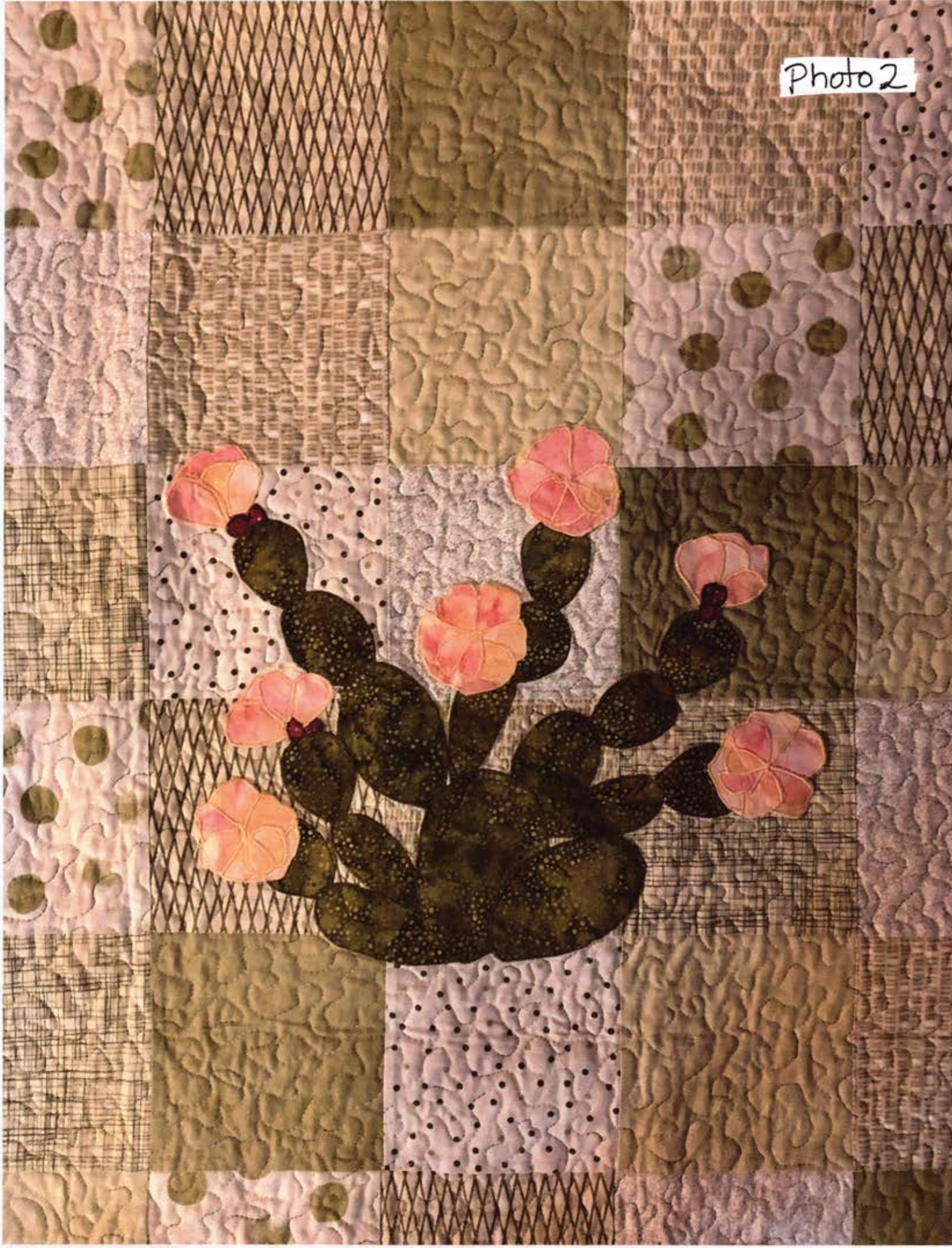
Pod for areas without flowers


↑
cut ~ 22 per cactus without flowers

Photo 1



Photo 2





Lookin' Sharp